

## Identification of Calcium and Magnesium in Medicine Using Plasma Laser Spectroscopy



Heri Sugito<sup>1</sup>, Ali Khumaeni<sup>2</sup>, Inaini Maskhanatul Fuadah<sup>3</sup>

<sup>1,2,3</sup> Department of Physics, Faculty of Science and Mathematics, Diponegoro University, Semarang, Indonesia 50275

**ABSTRACT:** The identification of magnesium (Mg) in pharmaceutical products was carried out using LIPS (Laser-Induced Plasma Spectroscopy). The lasers used in the research were Nd: YAG laser and CO<sub>2</sub> laser. The sample used was a supplement tablet. The laser beam is directed and focused by a convex lens on the sample. The plasma beam is induced on the sample surface. The sharp and high-intensity emission spectrum detected using the Nd: YAG laser indicates the presence of Calcium (Ca) and Magnesium (Mg) in the sample. The results obtained were then compared with sample testing using a CO<sub>2</sub> laser. The results of the Mg spectrum intensity were much higher using a CO<sub>2</sub> laser.

**KEYWORDS:** LIPS, Nd: YAG, Magnesium, Calcium

### I. INTRODUCTION

Identification of macro elements in pharmaceutical products is very necessary because of the importance of the elements for the human body. Macroelements include calcium, magnesium, zinc, potassium, and sodium, which are highly beneficial to human health [1]. Therefore, regular checks on the quality of pharmaceutical products containing macro elements are very important.

Several methods have been used for drug analysis. The Inductively Coupled Plasma Mass Spectrometry (ICP-MS) method has been used to identify macro elements (Ca, K, Mg, and Na), microelements (Cu, Ni, Fe, Mn, and Zn), and trace elements (Al, Co, Cd, Ti, Rb, and Sr) in fifteen samples of American ginseng herbal medicine [2]. Another method has also been used to identify the element content in the Indian ginseng herbal medicine, namely the Atomic Absorption Spectroscopy (AAS) method. In this study, it was explained that ginseng herbal medicine contains macro elements (K, Ca, and Na), microelements (Zn, Fe, Cu, Ni, and Mn), and trace elements (Al, Co, Cd and Cr) [3]. Both of these methods have high sensitivity and can identify macro and micro elements at low concentrations. However, both methods are quite complicated, the equipment is expensive, can only be used for liquid samples, and requires a long sample preparation time and quite a large number of samples [4].

Another method that is more effective and can be applied easily to identify elements in samples is laser plasma spectroscopy or Laser Induced Breakdown Spectroscopy (LIBS). The laser plasma spectroscopy method can identify various types of samples such as liquid, solid, and gas [5]. Apart from that, the advantage of the LIBS method is that it has quite good sensitivity, more affordable device prices, and fast implementation time so results can be obtained at that time for further data analysis [6].

Laser-induced plasma spectroscopy (LIPS) commonly called laser-induced breakdown spectroscopy (LIBS) is a new method in analytical spectroscopy. In LIBS, it is common to use laser pulses to induce plasma flare [7-8]. The resulting plasma is captured by a spectrum analyzer in the form of an OMA (optical multichannel analyzer) to obtain an emission spectrum. Compared to other conventional methods, LIBS allows one to perform elemental analysis quickly and without pre-treatment [9-10]. In addition, LIBS systems are much cheaper than other spectrochemical equipment such as ICP and x-ray fluorescence spectroscopy.

Some researchers have used LIBS to detect elements in pharmaceutical products [11]. However, in this study, an Nd: YAG pulse laser was used. In the research, a comparative study was also carried out on LIBS studies to detect macro elements in pharmaceutical products using an Nd: YAG pulse laser and a CO<sub>2</sub> laser. It was found that the emission spectrum of Ca and Mg elements in supplement drugs was much better when a CO<sub>2</sub> laser was used, namely the emission intensity was much higher when compared to the Nd: YAG laser.

# Identification of Calcium and Magnesium in Medicine Using Plasma Laser Spectroscopy

## II. METHODS

The equipment set-up used in the research (figure 1a) consists of a laser (Nd: YAG laser (1,064  $\mu\text{m}$ , 60 mJ, 10 ns,) and CO2 laser (10.64  $\mu\text{m}$ , 1500 mJ, 200 ns,)), lens to focus the laser beam, the chamber as a space for samples and producing plasma, a pulse generator as a power supply, an OMA which functions as a spectrum capture and analyzer, and a computer to display spectrum results and process spectrum data. The laser is irradiated and focused onto the sample surface using a quartz lens, as illustrated in Figure 1 b, to induce plasma flare. The plasma diameter on the sample surface produced with the Nd: YAG laser is 0.1 mm, while for the CO2 laser, it is 2 mm.

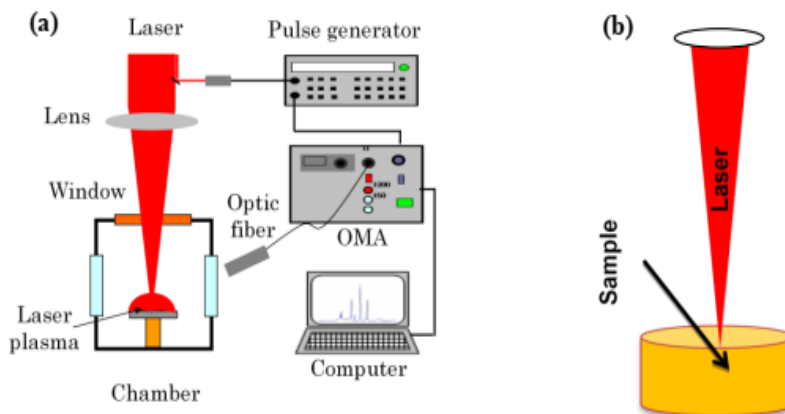


Figure 1. (a) Tool set-up, (b) illustration of shooting a sample target

The samples used in this study were supplement drugs containing around 2.5% and 1% Ca. Mg. The sample was put into a container placed in the chamber (12 cm x 12 cm x 12 cm). Plasma is produced at an air pressure of 1 atm. To obtain spectral emissions, the plasma emissions obtained from the sample are sent to a spectrograph system in the form of an OMA via optical fiber.

## III. RESULTS AND DISCUSSION



42.pdf



42.docx



41.pdf



41.doc



40.pdf



40.doc

Figures 2 and 3

are the results of detecting calcium and magnesium content in supplement drugs using the Nd: YAG laser and CO2 laser. The resulting emission spectrum lines are compared to the standard spectrum database at NIST (National Institute of Standards and Technology). The spectrum results detected by OMA show that there are several calcium emission lines, namely Ca II 393.3 nm, Ca II 396.8 nm, and Ca II 422.6 nm. Ca II 393.3 nm has an ionization energy of 3.2 eV at the Ek level and the lowest energy at the Ei level of 0 eV. The emission spectrum produced by the CO2 laser looks sharper with a higher intensity than the emission spectrum of the Nd: YAG laser.

The CO2 laser ionization energy level is higher, resulting in a higher emission intensity. The lower intensity of the neutral Ca lines in the CO2 laser also proves that the higher temperature in the plasma is caused by CO2 TEA. The plasma produced at high temperatures causes an effective atomic ionization process to occur and produces optimal emission intensity [12].

## Identification of Calcium and Magnesium in Medicine Using Plasma Laser Spectroscopy

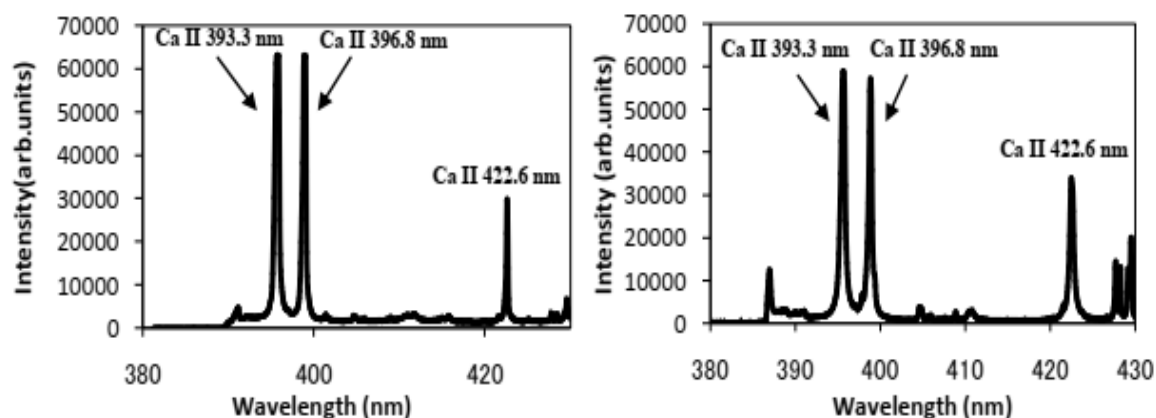


Figure 2. Ca emission spectrum, (a) TEA CO<sub>2</sub> laser, and (b) Nd: YAG laser.

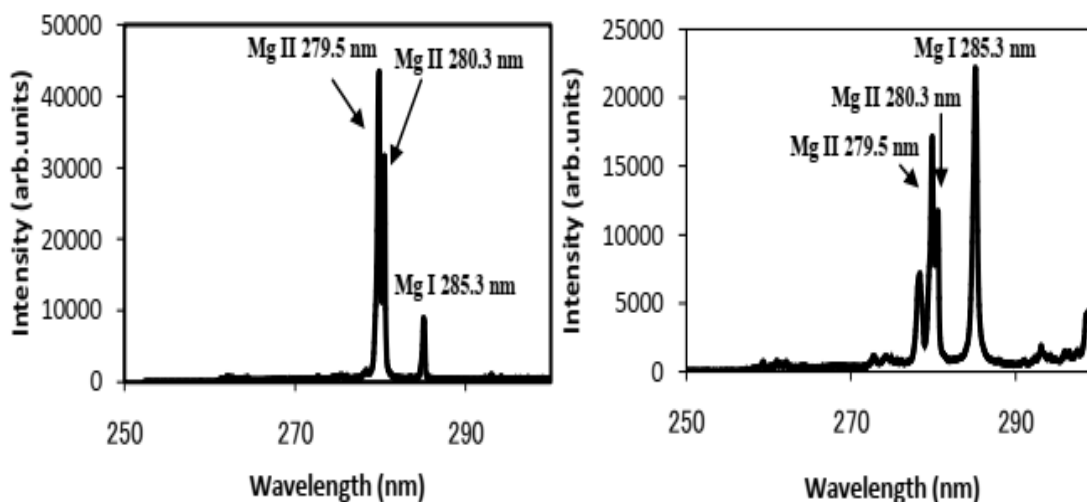


Figure 3. Mg emission spectrum, (a) with the TEA CO<sub>2</sub> laser, and (b) using the Nd: YAG laser

Spectrum emission lines with high intensity are visible at wavelengths of 279.5 nm (Mg II) and 280.3 nm (Mg II) using the TEA CO<sub>2</sub> laser. Meanwhile, with the Nd: YAG laser, the highest peaks can be seen at the 280.5 nm (Mg II) and 285.3 nm (Mg I) lines. The excitation energy of Mg II at the 279.5 nm and 280.3 nm emission lines is 4.4 eV from the ground state ionic level. The intensity of the emission spectrum produced by the TEA CO<sub>2</sub> laser looks higher when compared to the Nd: YAG laser. Meanwhile, for Mg I, the spectrum line produced by the TEA CO<sub>2</sub> laser looks lower with an energy of 7.6 eV. Based on the level of ionization energy, the Mg ionization process is more effective using a TEA CO<sub>2</sub> laser because the resulting plasma has a high temperature, resulting in a high emission intensity.

## IV. CONCLUSION

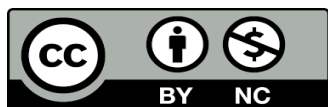
LIPS can be used as a method for identifying elements from solid materials. This result is proven by the emission spectrum lines produced. The Ca and Mg emission spectra obtained using a CO<sub>2</sub> laser have much higher intensities than using a Nd: YAG laser. Plasma temperature makes a significant contribution to the emission spectrum. That is, the higher the plasma temperature, the higher the intensity of the observed spectrum.

## REFERENCES

- 1) Porta, R., et al. (2016). Flow Chemistry: Recent Developments in the Synthesis of Pharmaceutical Products. *Organic Process Research & Development* 20(1): 2-25.
- 2) Wang, J., Wang, S., Ge, X., and Zhang, M., 2021. Authentication of American Ginseng (Panax quinquefolius L) from Different Origins by Linear Discriminant Analysis of Multi-Elements. *European Food Research and Technology*, 247(10), 2657–2666.
- 3) Lokhande, R., Singare, P., and Andhale, M., 2010. Study on Mineral Content of some Ayurvedic Indian Medicinal Plants by Instrumental Neutron Activation Analysis and AAS Techniques. *Health Science Journal*, 4(3), 157–168.

## Identification of Calcium and Magnesium in Medicine Using Plasma Laser Spectroscopy

- 4) Nicolodelli, G., Senesi, GS, Oliveira Perazzoli, IL, Marangoni, BS, De Melo Bentes, V., and Milori. 2016. Double Pulse Laser Induced Breakdown Spectroscopy: a Potential Tool for the Analysis of Contaminants and Macro/Micronutrients in Organic Mineral Fertilizers. *Science of the Total Environment*, 565, 1116-1123.
- 5) Khumaeni, A., Hartadi, BS, Wardaya, AY, Sugito, H., and Budi, WS, 2020. Identification and Analysis of Major Elements in Indonesian Herbal Medicine using Laser-Induced Plasma Spectroscopy. *Rasayan Journal of Chemistry*, 13(2), 898–902.
- 6) Destriati, E., Marpaung, MA, and Karnadi, I., 2020. Identification of Mercury Metal Content in Cosmetics Using Laser Induced Breakdown Spectroscopy (LIBS) Technique. *Proceedings of the UNJ National Physics Seminar*, December 2020.
- 7) Miziolek W, Palleschi V, Schechter, I.(2006). *Laser-induced Breakdown Spectroscopy (LIBS), Fundamentals and Applications* (Cambridge University Press, New York).
- 8) Cremers DA, and Radziemski LJ (2006). *Handbook of Laser-Induced Breakdown Spectroscopy* (John Wiley and Sons Ltd, Chichester).
- 9) Khumaeni, A., et al. (2010). A novel double-pulse laser plasma spectroscopic technique for H analysis in metal samples using transversely excited atmospheric-pressure CO<sub>2</sub> laser-induced metastable He atoms. *Optical Review* 17(3): 285-289.
- 10) Ali Khumaeni, Zener Sukra Lie, Hideaki Niki, Yong Inn Lee, Kazuyoshi Kurihara, Motoomi Wakasugi, Touru Takahashi, and Kiichiro Kagawa, (2012). Comparative study of Nd: YAG laser-induced breakdown spectroscopy and transversely excited atmospheric CO<sub>2</sub> laser-induced gas plasma spectroscopy on chromated copper arsenate preservative-treated wood. *Appl. Opt.* 51, B121-B129.
- 11) St-Onge L., Kwong E., Sabsabi M., Vadas E.B. (2002). *Quantitative analysis of pharmaceutical products by laser-induced breakdown spectroscopy*. *Spectrochim. Acta B* Volume 57, Issue 7, p. 1131-1140.
- 12) Khumaeni, A., et al. (2012). Emission Characteristics of Ca and Mg Atoms in Gas Plasma Induced by the Bombardment of Transversely Excited Atmospheric CO<sub>2</sub> Laser at 1 atm. *Japanese Journal of Applied Physics* 51: 082403.



There is an Open Access article, distributed under the term of the Creative Commons Attribution – Non Commercial 4.0 International (CC BY-NC 4.0) (<https://creativecommons.org/licenses/by-nc/4.0/>), which permits remixing, adapting and building upon the work for non-commercial use, provided the original work is properly cited.